



ARTKELO

**MOSCOW OFFICE**

111 Goliyevo Village Ilyinskoye  
Highway Krasnogorsk District  
Moscow Region, Russia  
+7 (495) 640-03-80

**PRODUCTION**

2 Meliorativny Town Prionezhsky  
District, Petrozavodsk, Republic  
of Karelia, Russia

[info@artkelo.com](mailto:info@artkelo.com)  
[artkelo.com](http://artkelo.com)

 [keloartel](#)  [artkelo](#)



ARTKELO

We will build for you an ecological  
Log House by using only natural material —  
Dry Standing Arctic Pine «Kelo»



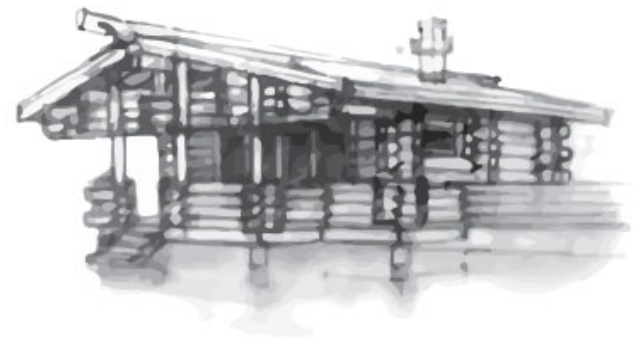






Parkville  
sauna

---







**62 m<sup>2</sup>**

Total area

**31 m<sup>2</sup>**

Area of the rooms



The Log House  
walls set\*

**36 600 €**

Basic Price for the  
Complete Log House\*

**87 800 €**

\* More details you will find  
on the page 50

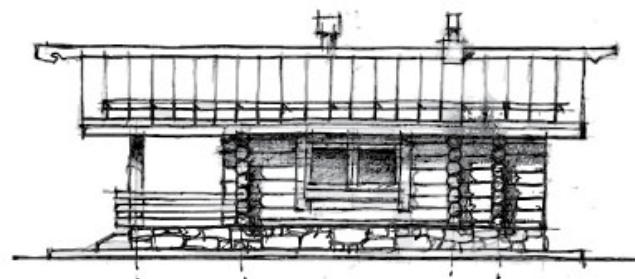






Oravaniemi  
sauna

---







**60 m<sup>2</sup>**

Total area

**36 m<sup>2</sup>**

Area of the rooms



The Log House  
walls set\*

**39 900 €**

Basic Price for the  
Complete Log House\*

**126 000 €**

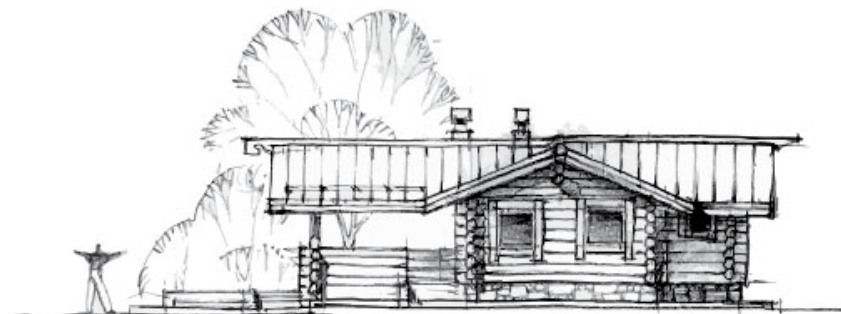
\* More details you will find  
on the page 50







Istra Hills  
sauna







**109 m<sup>2</sup>**

Total area

**56 m<sup>2</sup>**

Area of the rooms



The Log House  
walls set\*

**33 000 €**

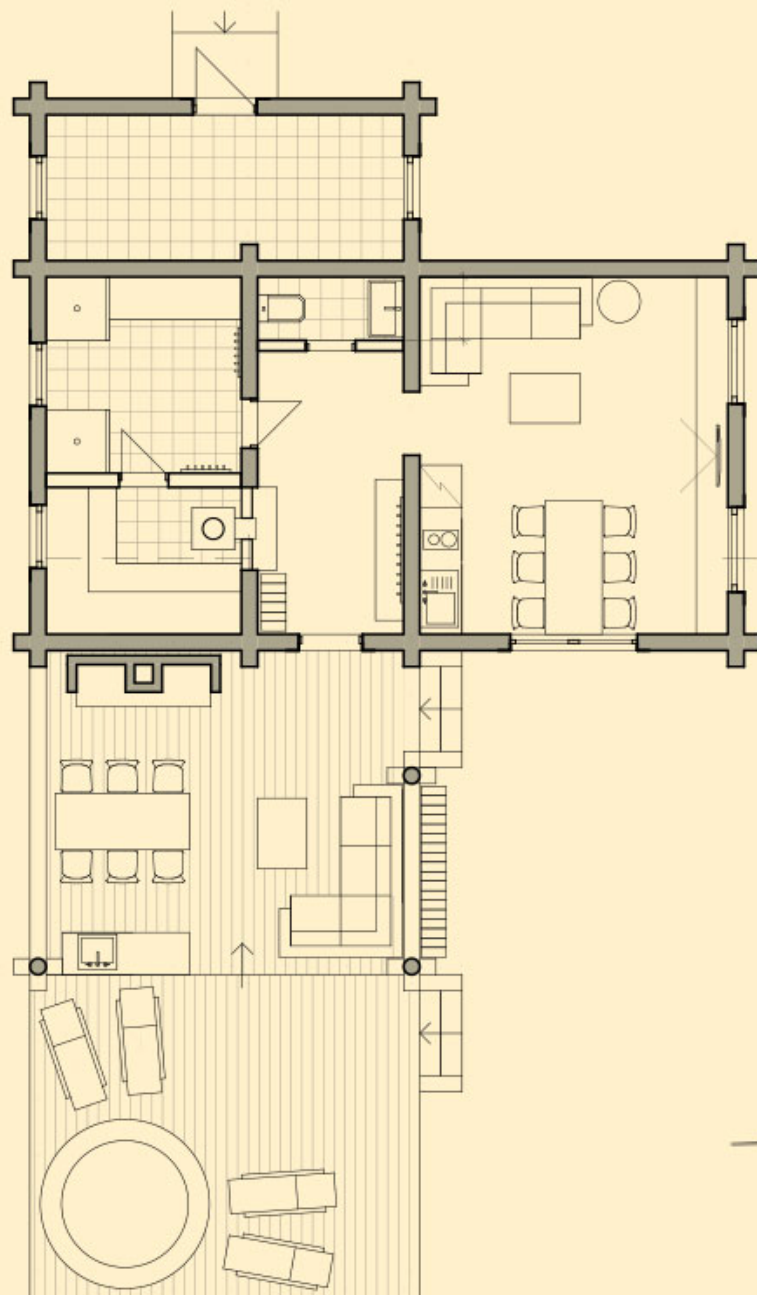
Basic Price for the  
Complete Log House\*

**156 000 €**

\* More details you will find  
on the page 50









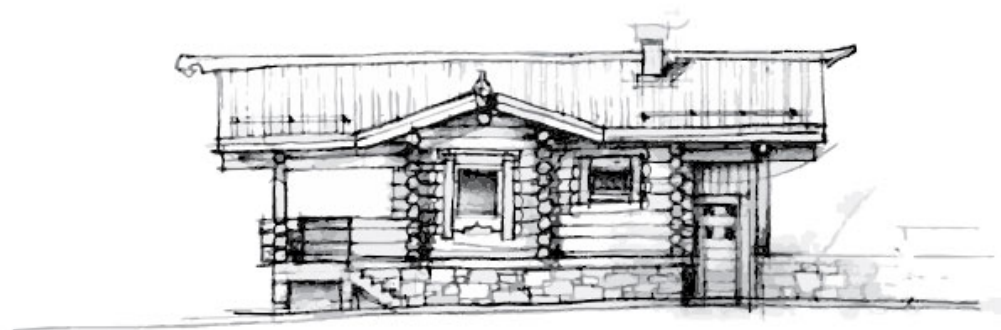






Nekrasovo  
sauna

---







**65 m<sup>2</sup>**

Total area

**30 m<sup>2</sup>**

Area of the rooms



The Log House  
walls set\*

**39 900 €**

Basic Price for the  
Complete Log House\*

**90 500 €**

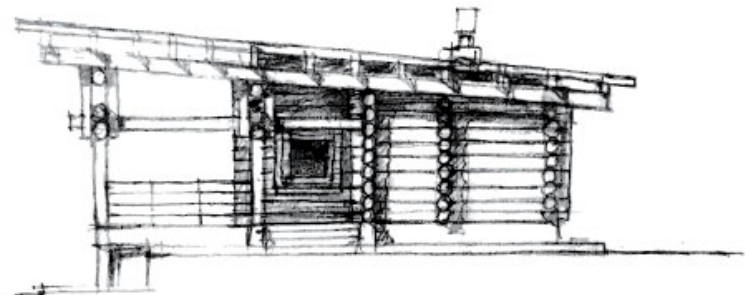
\* More details you will find  
on the page 50







Istra Country Club  
sauna







**96 m<sup>2</sup>**

Total area

**42 m<sup>2</sup>**

Area of the rooms



The Log House  
walls set\*

**29 900 €**

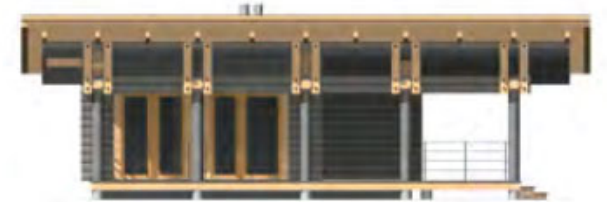
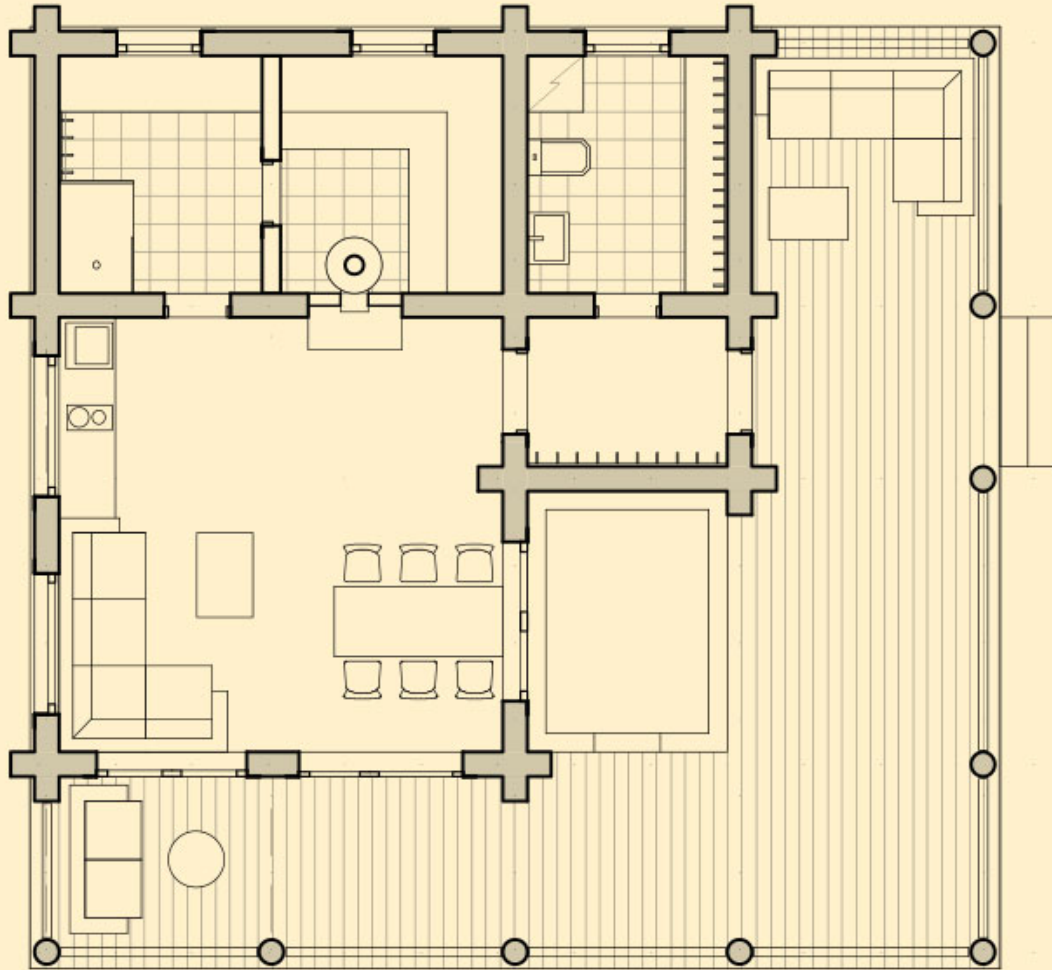
Basic Price for the  
Complete Log House\*

**121 250 €**

\* More details you will find  
on the page 50









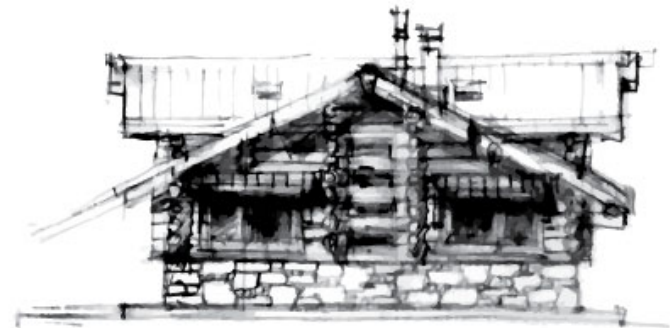






Voskhod  
house

---







**189 m<sup>2</sup>**

Total area

**138 m<sup>2</sup>**

Area of the rooms



The Log House  
walls set\*

**93 300 €**

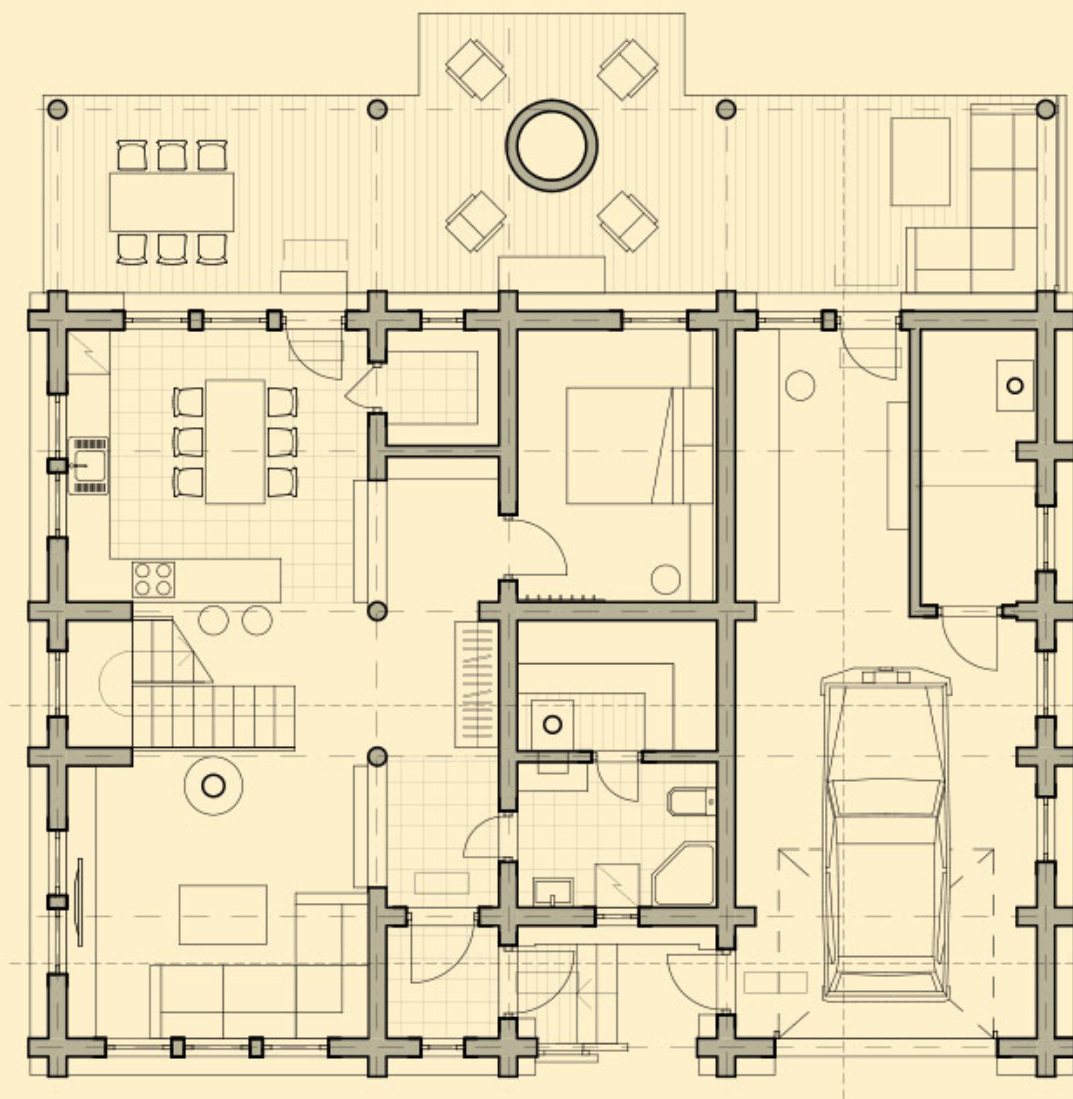
Basic Price for the  
Complete Log House\*

**220 000 €**

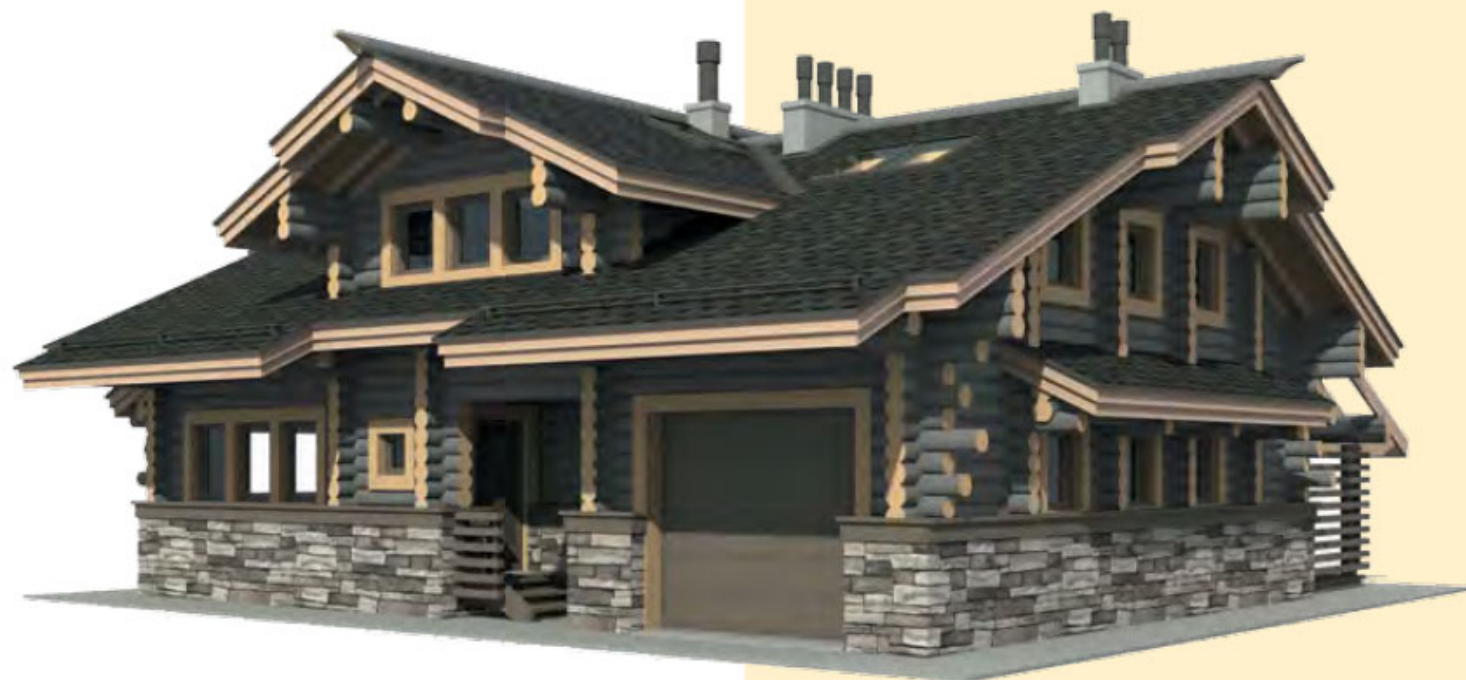
\* More details you will find  
on the page 50









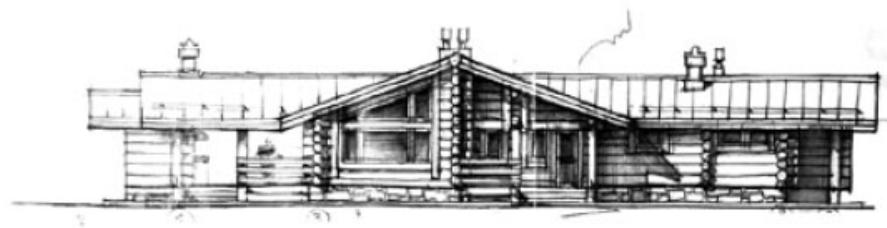






Istra Hills  
house

---







**186 m<sup>2</sup>**

Total area

**112 m<sup>2</sup>**

Area of the rooms



The Log House  
walls set\*

**140 000 €**

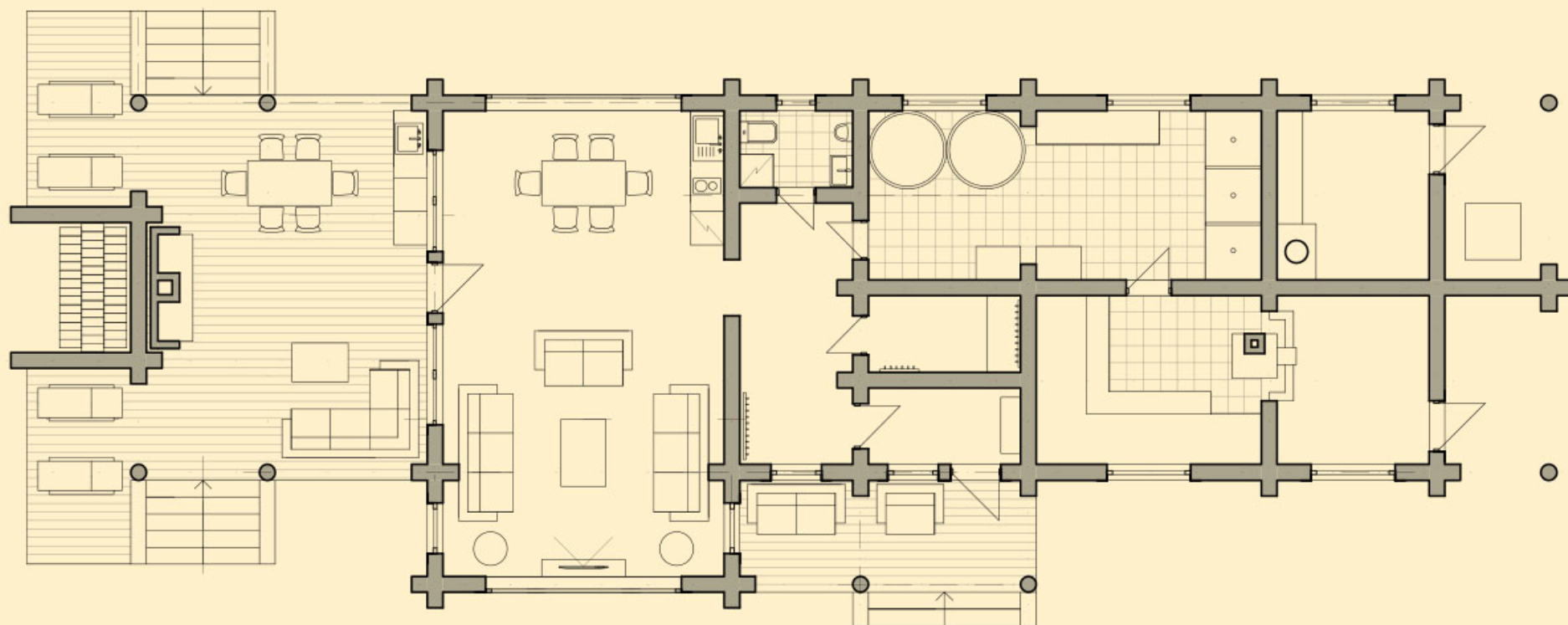
Basic Price for the  
Complete Log House\*

**278 600 €**

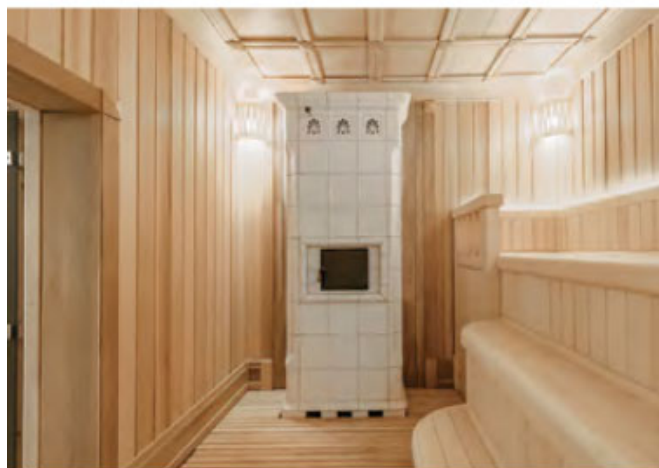
\* More details you will find  
on the page 50















Reschniki  
sauna







**122 m<sup>2</sup>**

Total area

**99 m<sup>2</sup>**

Area of the rooms



The Log House  
walls set\*

**76 300 €**

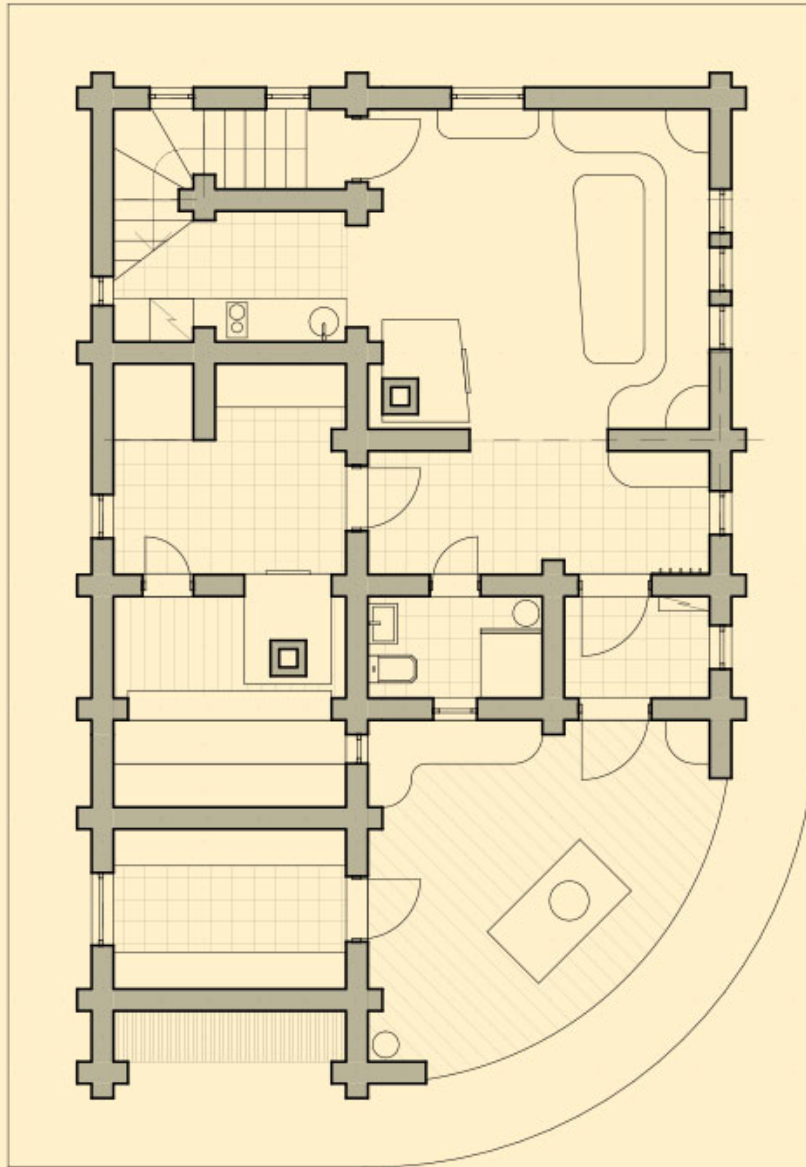
Basic Price for the  
Complete Log House\*

**204 300 €**

\* More details you will find  
on the page 50















Fominskoe  
sauna

---







**149 m<sup>2</sup>**

Total area

**82 m<sup>2</sup>**

Area of the rooms



The Log House  
walls set\*

**76 300 €**

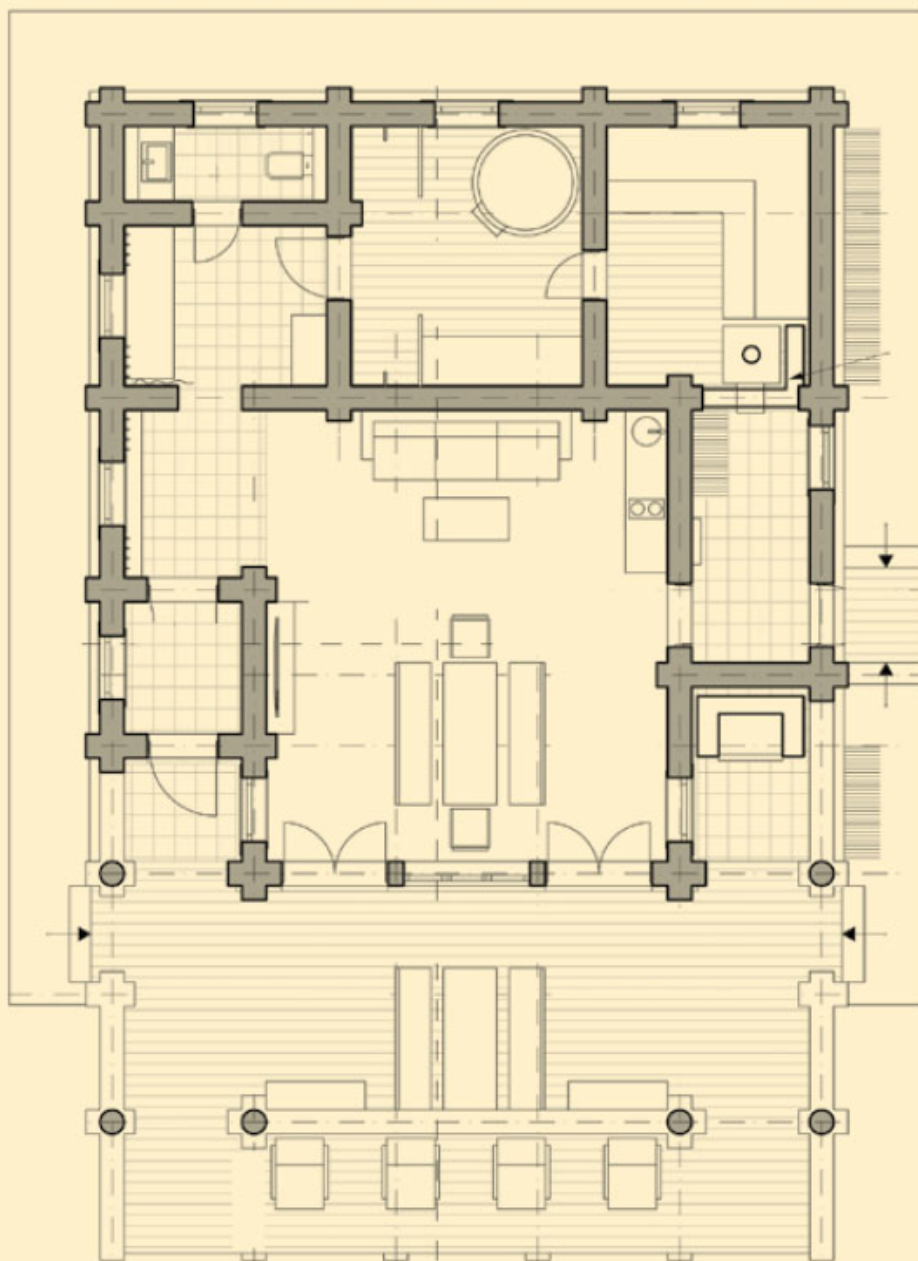
Basic Price for the  
Complete Log House\*

**149 600 €**

\* More details you will find  
on the page 50









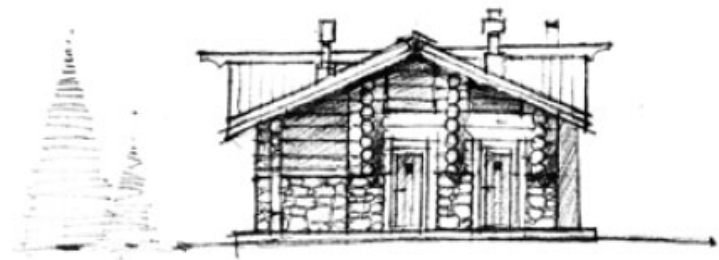






Valday  
guest-house

---







**110 m<sup>2</sup>**

Total area

**45 m<sup>2</sup>**

Area of the rooms



The Log House  
walls set\*

**36 700 €**

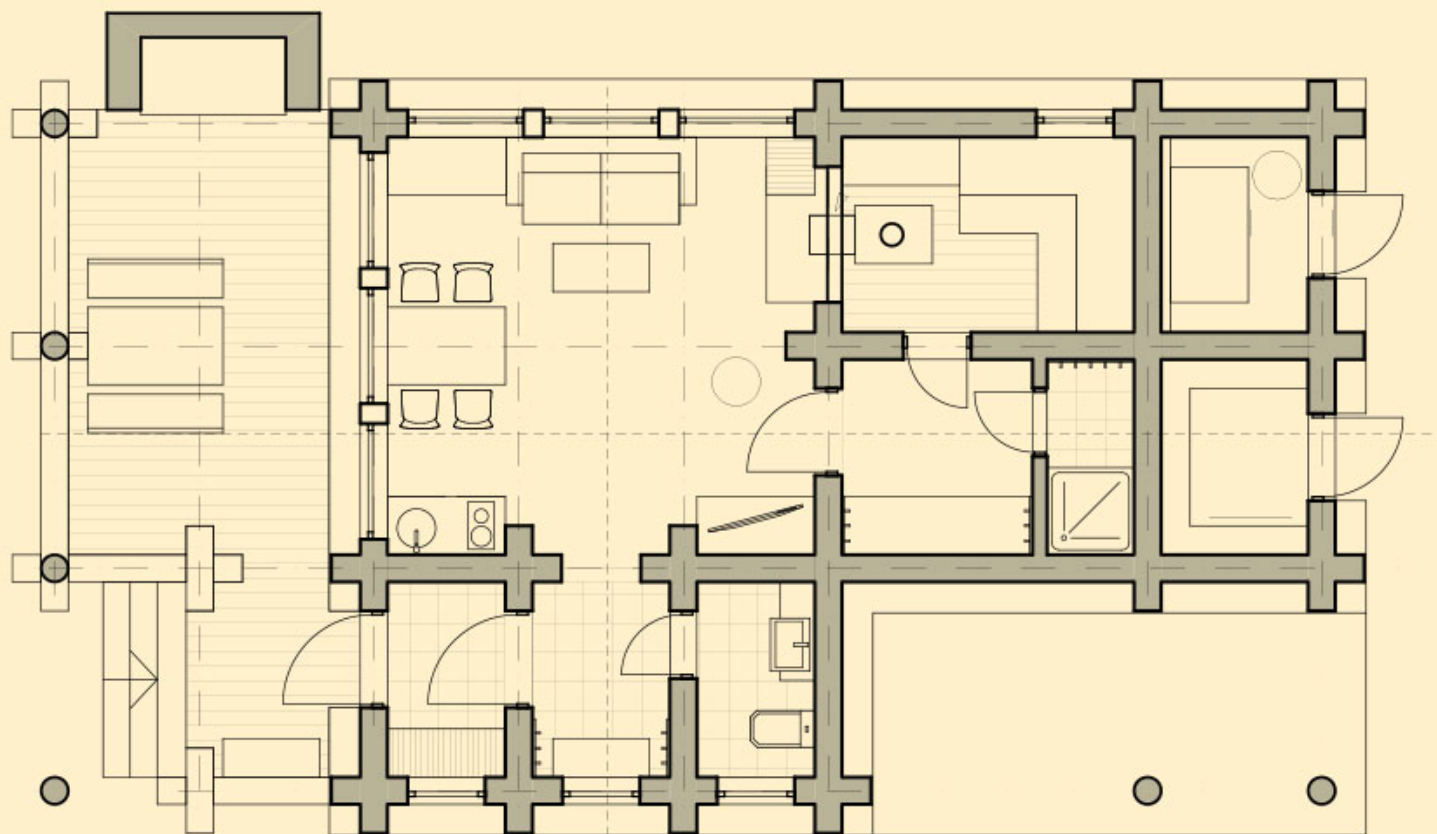
Basic Price for the  
Complete Log House\*

**116 000 €**

\* More details you will find  
on the page 50













## Log house at night

---

At night, log house looks differently with illumination and lighting. The light directed at the surface of the logs create an enigmatic shadow play.







## The interiors

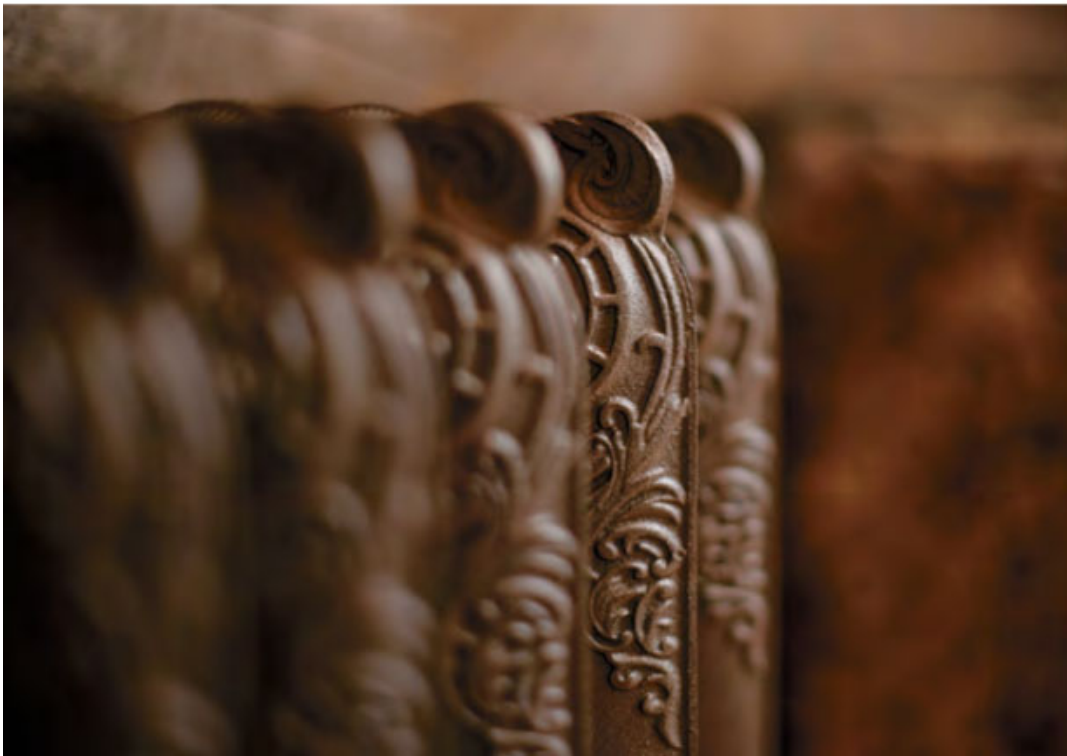
---

We seek to avoid paint and lacquers when finishing the rooms. The palette of the Polar pine consists of silvery, ashy, and brown colors typical for sapwood as well as orange and yellow colors of the heartwood. The combination of the cold silvery and the clear and warm yellow colours creates an unique atmosphere that shows the bond between the old and the young and matches with the natural colours of the windows, doors, and the larch deck board. Many of our customers choose roofs covered with larch shingles in combination with ceilings covered with edging boards from dry standing Altai cedar.

Building a house requires teamwork which combines a broad spectrum of knowledge and practical experience. Our partners provide our houses and bathhouses with durable and reliable engineering equipment. Brass and copper electrical switches, sockets and external vintage-style wiring perfectly fit log walls of our houses. You can also automate your appliances and lighting by installing wired smart home systems that can be hidden in the walls.









## What is the arctic Kelo Pine?

The harsh polar climate of the north Karelia, where the Arctic Circle runs at a latitude of 66°33'44"N, has created very special environment where rare pine forests grow on a huge territory of 9.5 million hectares.

The pine trees live in these severe conditions from around 150 to 250 years and over that period grow 20–50 centimeters thick and 20 to 40 meters tall. When a tree finishes its life cycle, its needles fall off first, and then branches and finally its bark fall down revealing the wood. The deep spreading roots of the tree keep it standing for 15–20 years more. During that time, the exposed wood tends to change its color to a fine silvery with patches of subtle green, brown and ash-grey. The moth spreads over its trunk and bark beetles leave fanciful ornaments on the wood. That is how a pine tree turns slowly into this very special material, which is called 'Kelo' in Finnish — 'a standing snag'. In Russia, we call it the Arctic Kelo Pine for its rare natural qualities, which give it many advantages as a construction material.







### **No shrinkage**

For building log house walls we use trees that dried out while still standing. Their trunks have a stable moisture content that is perfect for building a log house, which allows to start finishing works immediately after having assembled the wall set. As a result it saves you from 12 to 18 months of construction works.



### **No need for any chemical treatment of the logs**

Arctic pine logs are not affected by various environmental factors and therefore do not require any treatment with paint, varnish, oil antiseptic which not only protects your health, but also saves from 25 to 40 percent of the log house walls set value.



### **Natural color and constant scent of the wood**

Log Houses and Russian Sauna Log Houses built from arctic pine is a combination of the pristine beauty with practicality and economy. Our photo galleries show the overall image but they cannot convey the scent of the Polar pine.





## How do we get the arctic Kelo Pine?

---

Our business is built on a solid knowledge of the forest and unique skills in searching, harvesting and transporting Arctic pine trees in the forest. We do it with the special equipment. During summer time we use quad bikes and mini-tractors, in wintertime — snowmobiles with specially designed sleds for rough terrain transportation. Neither rocks, no streams, nor swamps can be an obstacle for transportation of logs as long as 12 meters in length and over 50 centimeters thick in diameter with the weigh of more then 2 tones.





We have skills and expertise to overcome difficulties working with these logs. Heavy machinery equipment such as trucks, full-size tractors and special timber harvesting equipment can not access and work deep in the forest, hence we carry out the hardest part of the harvesting job with light, highly maneuverable vehicles and equipment. We never cut living trees. We only accept and work with what the nature shares with us. Choosing the Arctic Kelo Pine as a construction material for your house, you create not only eco-friendly log house for you and your family but also save the forest on our planet.





## Our production facilities

Our production site 10 km away from the town of Petrozavodsk is one of the biggest and best equipped sites in the Kelo Pine dry wood processing and construction industry. This is where Kelo logs get a new life serving as a material for our customers' houses.

- Our storage can hold more than 800 m<sup>3</sup> of Arctic Pine Logs;
- Our band saw can produce more than 100 m<sup>2</sup> of «Kelo» planks daily;
- There are 3 pieces of lifting equipment on site including a heavy tower crane with a load capacity over 2 tons and an outreach of 30 meters;
- We have 3 000 m<sup>2</sup> area equipped with a video surveillance for the storage of ready built log houses and parking space for the specialized machinery configured to work with the dry pine logs.

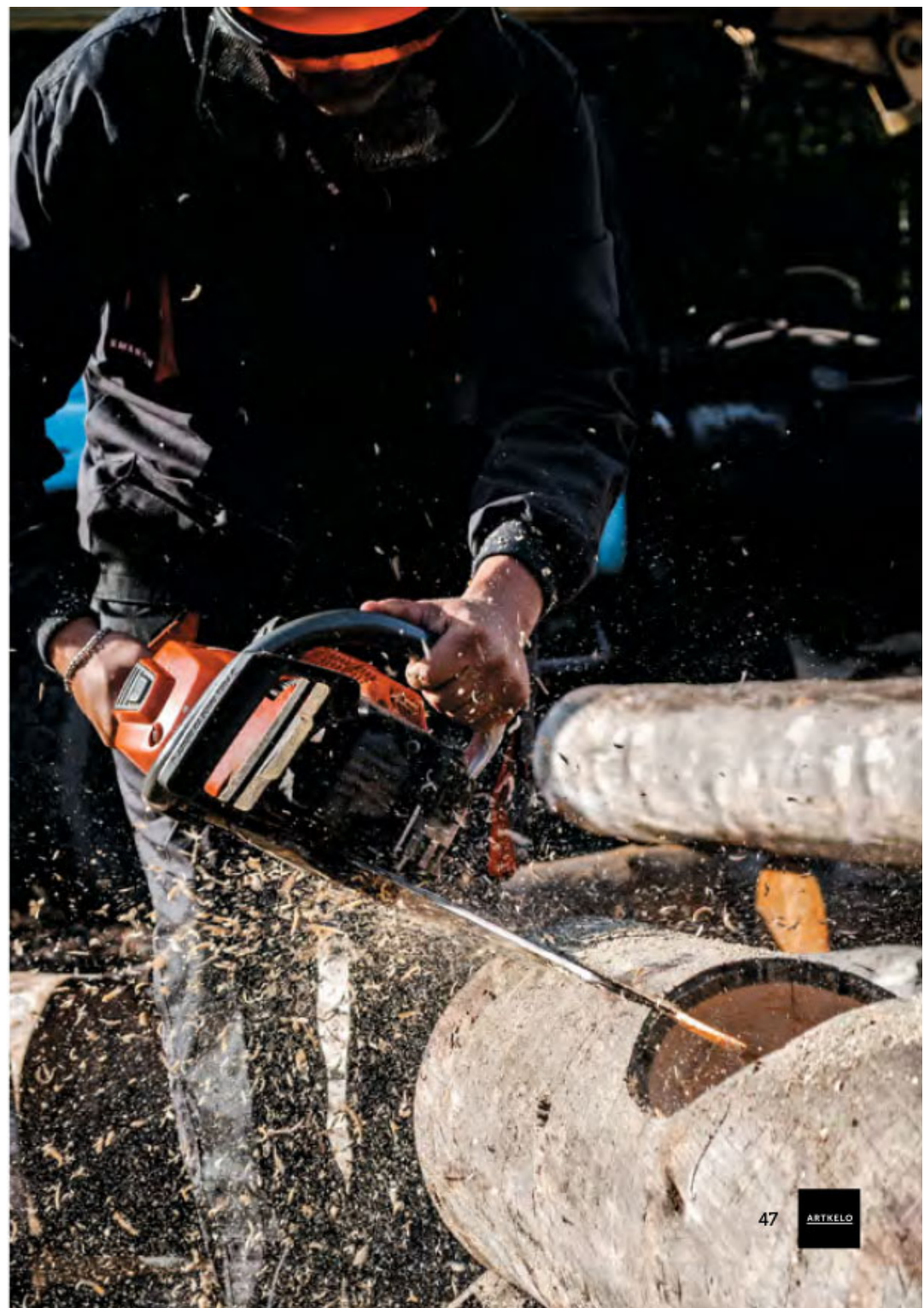
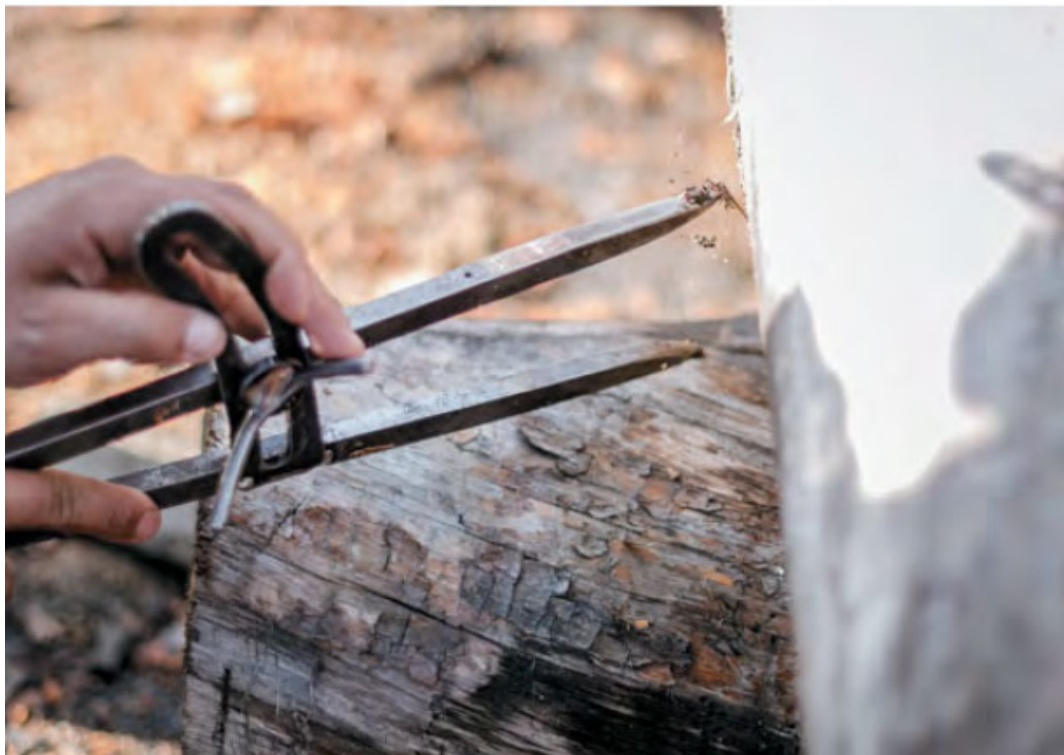
The hoists we use are equipped with special grippers that do not damage log surface. Our team consists only of professionals whose expertise is the key to the successful production of high quality log houses for our customers in Russia, CIS, EU and the United Kingdom.





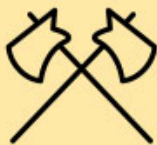
Our production site has a wood processing shop for the production of the finishing materials for ceilings, walls and other interior elements as well as furniture which all together create a unique atmosphere in the log house saunas and log houses we build.

Our machinery equipment can process logs of any size including 8 meter-long logs with a diameter of more than 80 cm. Besides the Arctic Pine finishing materials we also use dry standing Oak from the South of Russia, Altai Cedar, Krasnoyarsk Larch and other types of exclusive timber.





## About company



67

permanent  
employees



3

production sites  
and facilities



23

units of special  
machinery

We harvest Arctic Pine all the year round and do the permanent timber works

We make the individual project documentation within 45 days

We make and control the full construction process till the completion

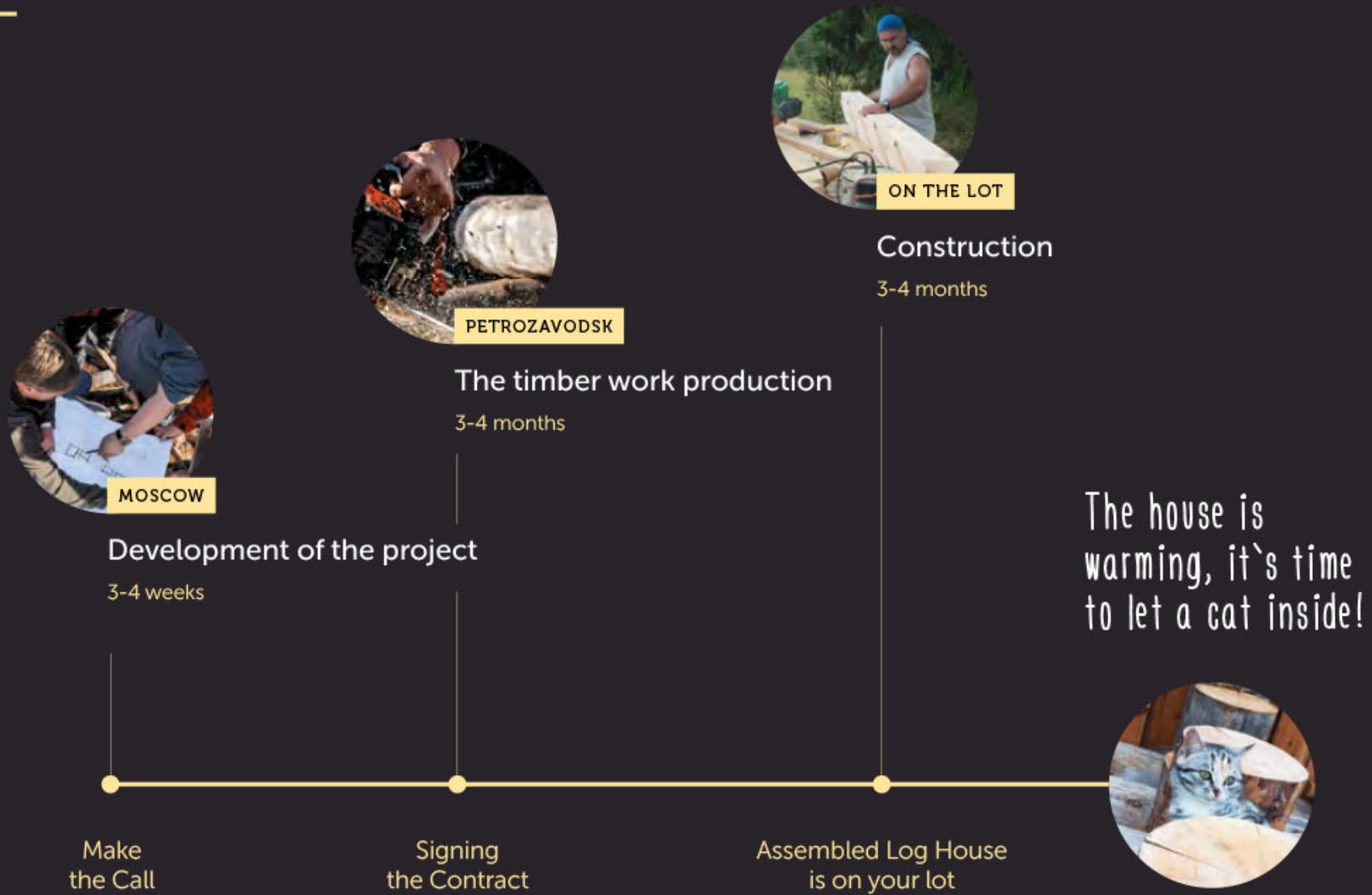
We can produce any decoration and finishing materials within 5 days

We do not have any bureaucratic obstacles

We solve the troubles independently of when the log house was build



# The manufacturing process







## The Log House wall set

---

- Harvesting of dry standing Arctic Pine «Kelo»;
- Manufacturing the wall set and all the log elements of the structure;
- Marking the logs of the wall set;
- Delivery of the logs wall set to the construction site;
- Unloading the trucks;
- Assembly of the log house on site, carpenter work, installation of the whole structure including insulating tape and insulation between the logs, nails, screws and all other fixing materials.





# Artkelo company

Over 8 years we have built 87 big and small Log Houses for different purposes in Russian Federation and overseas.

## Table of contents

Parkville sauna	4
Oravaniemi sauna	6
Istra Hills sauna	8
Nekrasovo sauna	12
Istra Country Club sauna	14
Voskhod house	18
Istra Hills house	22
Reschniki sauna	26
Fominskoe sauna	30
Valday guest-house	34
Log house at night	38
The interiors	40
What is the arctic Kelo Pine?	42
How do we get the arctic Kelo Pine?	44
Our production facilities	46
About company	48
The manufacturing process	49
Details	50



# The Basic Set

## Preparing the project documentation

Adaptation of the initial project, including development of the facades and plans.

## Foundation

Making the Foundations in iron reinforced concrete for all the perimeter of the structure including supporting walls (according to local rules and regulations).

## Sewage

Making the Inner and Outer sewage networks (according to the local rules and regulations).

## Wall set

- Log walls set is made of dry standing Arctic Pine «Kelo»;
- Log insulation is either flax or thermally treated jute of 10-20 mm;
- Wood nails of square section are made of dry standing pine or oak;
- Threaded rods are 8-10 mm and adjustable compensators.

## House floors

Thickness of the iron reinforced concrete floor slab: 200 mm.

## Roofing

- Assembly of the roofing structure includes fasteners, dry beams, vapor barrier, waterproof membrane and thermal insulation;
- Installation of roof covering material which is larch shingles;
- Installation of gutter and water evacuation pipes from the roof.

## Windows

Wooden windows: pine profile, triple glazing, «Roto NT» fittings, «Deventer» seals, «Gutmann» weather bars, «Zowasan paint, including extensions, architraves and windowsills from planed boards.

## Doors

Pine, «Roto NT» fittings, «Deventer» seals, «Gutmann» weather bars, «Zowasan» paint, including extensions, architraves and windowsills from planed boards.

## Wall decoration

Grinding the logs ends and impregnating them with Tikkurila Valtti Puuöljy oil. Cutting the excess jute and filling the gaps.

## Terrace

Making the terrace base structure, including fireproof and biosafe treatment of the timber.

## Additionally

**Staircases, Stove/fireplace, Electrical wiring and fittings, Heating, Basins or swimming pool, Plumbing, Architectural lighting**  
As agreed.

## Finishing of the ceilings and drip caps, flooring

Options: dry standing arctic pine, dry standing cedar, ash wood or oak boards.